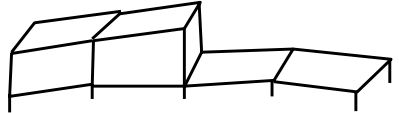
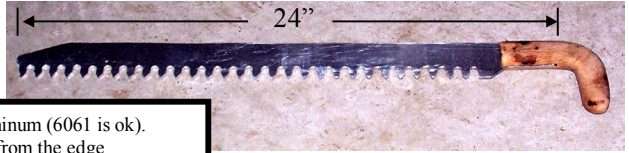


How to make an Igloo

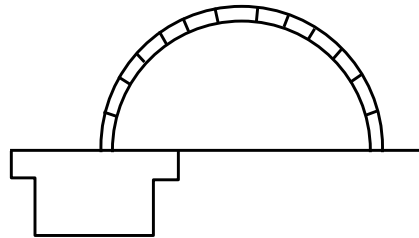
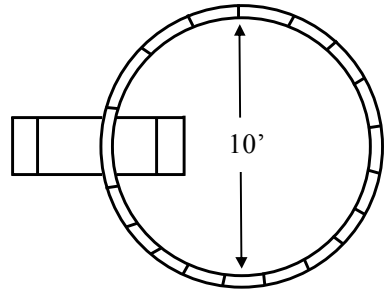
Make a Snow Saw

- 1) Cut 24" by 2" piece of 1/8" thick aluminum (6061 is ok).
- 2) Drill a row of 3/8" holes centered 1/2" from the edge spaced 3/4" apart.
- 3) Cut the teeth with hack saw or band saw
Cut straight in, tangent to hole, then bluntly sharpened.
- 4) Cut out oak handle and smooth.
- 5) Drill two holes through oak handle and aluminum, insert steel pins in holes and epoxy. Oil the oak.



Cut Snow blocks and build igloo

- 1) Use snowshoes to pack down snow 20' x 20', let set 1/2 hr.
- 2) Use snow saw to cut snow blocks 24" by 12" by 6" thick.
Use scoop shovel to break blocks loose and other digging.
- 3) Set snow blocks in 10' diameter circle, spiraling upward.
- 4) Whack blocks firmly in place so they stick to base and side.
They will become more horizontal and triangular. Trim to fit.
- 5) Carve the blocks so they tilt strongly inward.
- 6) Cut entrance below floor level as shown.
- 7) Maintain a ventilation hole in the top.
- 8) Smooth the inside walls to avoid drips.
- 9) Takes 3 hours for two motivated novice adults.



- 1) Lay down tarps, pads, sleeping bags.
- 2) Light two candles by the entrance.
- 3) Sleeps two comfortably.